

# INFRASTRUCTURE REPLACEMENT

McHenry & Associates will work with you to design solutions to suit you and your client's needs. In addition to MEP design for a variety of new and remodeled building types, McHenry & Associates also specializes in infrastructure replacement such as:

- Central Air Handling Unit Replacement
- Central Chilled Water System Replacement
- Cooling Tower Replacement
- Historical Building MEP upgrades
- Boiler Replacements
- Emergency Generator Replacement
- Energy Management Systems

McHenry's experienced team of design engineers are committed to providing clear and concise design documents to identify all phases of the project to help you maintain a project that is within your budget. Our services include the following:

- Design of Temporary HVAC Systems
- Phasing Plan - For Minimum Disruption to Your Daily Operations.
- Demolition Documents for Removal of Existing Systems
- New System Design Documents
- Construction Administration
- System Commissioning & Start-up Supervision

McHenry & Associates can provide the services needed to meet your project requirements. Our firm can assist in planning & preparing budgets for replacement of critical systems to avoid costly emergency repairs or replacements of failed systems. We recognize that infrastructure replacement is a team project that includes contractors, the building facilities staff, the users, and of course, the engineer. McHenry & Associates wants to be a part of your next team.

Take a look at some examples of recent projects we have designed:



*Careful planning, design & client coordination was required to remove the existing 25,000 CFM air handling unit to install the new unit shown. Existing utilities were relocated and a service platform was installed to maintain a watertight flooring system below the unit. This was done to protect a critical research area located below this room. Temporary HVAC was designed during the transition to minimize shutdown time.*

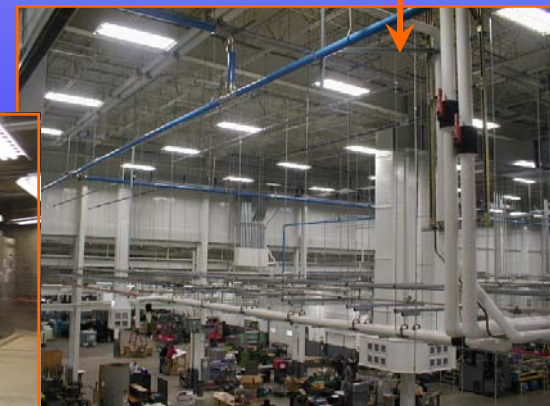
*This hospital substation was seamlessly integrated into the existing building. McHenry & Associates worked with the client from conceptual phases through design, construction administration and project commissioning.*



*McHenry & Associates will work to meet your most critical needs. Both of these projects required strategic planning & phasing to provide temporary HVAC service with minimum downtime.*



*McHenry & Associates worked with this industrial client to consolidate three different facilities under one roof. The project was carefully phased to reduce costly manufacturing shutdowns associated with equipment relocation.*



## EXPERIENCE

McHenry & Associates' most important asset is the experience of its engineering staff. We have been providing mechanical, electrical, plumbing and refrigeration design to clients of differing markets, both private and public, for 49 years.

## NEW OPPORTUNITY

We have sent you this brochure in hope that your company may be interested in the services McHenry & Associates can offer to a building owner trying to get the most from their new or existing facilities. We can tailor services to your specific needs and work to offer you high value at a competitive cost. We are confident that our team of experienced engineers can offer guidance that will benefit your company in many ways. Please do not hesitate to contact our office. Our team will be happy to answer questions and provide more detail on our capabilities and qualifications. Thank you for taking the time to learn more about us.

Please visit our website for additional information at [www.McHenryAssociates.com](http://www.McHenryAssociates.com) or contact us at:

216-292-4696

## QUALIFICATIONS

- Registered in 48 states, Washington, D.C. and Puerto Rico
- LEED Accredited Professionals
- ASHRAE member
- IESNA Member With LC Certified Staff
- IEEE
- ASPE



McHenry & Associates, Inc.  
25001 Emery Rd, Suite 200  
Warrensville Hts., OH 44128

# m&a McHenry & Associates

## MECHANICAL & ELECTRICAL CONSULTING ENGINEERS



## Comprehensive Mechanical & Electrical Infrastructure Replacement Design

*“Providing engineering solutions for  
49 years.”*